



Taylor Place, London, E3

BUTLER & STAG



Beautifully-kept one bedroom apartment offering breath-taking views and an abundance of natural light through its floor-to-ceiling windows.



- One Bedroom Apartment
- Secure Development with Concierge
- Air Conditioning System
- Part Furnished
- Seventh Floor Views
- Large Private Terrace
- Close To Transport Links
- Available from 21st December 2024

Meticulously maintained, this apartment is presented in pristine condition, ready for you to move in and make your own.

Open-plan to the fitted kitchen, the living / dining area is perfect for relaxation and entertaining, offering a versatile space that can be customised to suit your lifestyle and one which opens out onto a stunning private balcony with far-reaching views.

Completed by a generously-sized bedroom and a contemporary bathroom, this wonderful property is offered part furnished and is available from 21st December 2024.

The location is also second to none, connecting you to Canary Wharf and the City, as well as local hotspots like Victoria Park, the historic Roman Road and Westfield shopping centre at Stratford.

EPC Rating B
Council Tax Band C

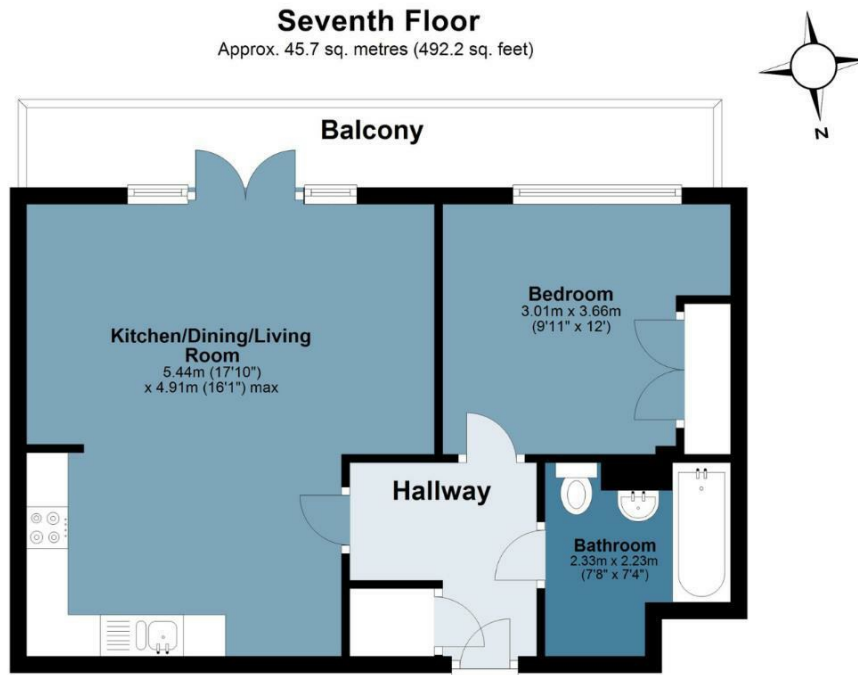




Taylor Place

BUTLER & STAG

Approx. Gross Internal Area 45.7 sq. metres (492.2 sq. feet)



Measurements are approximate and for illustration purposes only. While we do not doubt the accuracy and completeness, we advise you conduct a careful independent assessment of the property to determine monetary value
© @modephoto.uk www.modephoto.co.uk

IMPORTANT NOTICE - These particulars have been prepared in good faith and they are not intended to constitute part of an offer or contract. We have not performed a structural survey on this property and the services, appliances and specific fittings have not been tested. All photographs, measurements, floor plans and distances referred to are given as a guide and should not be relied upon.

BUTLER & STAG

☎ 020 8102 1236

🏠 508 Roman Road, Bow, London, E3 5LU

✉ bow@butlerandstag.com

www.butlerandstag.uk